



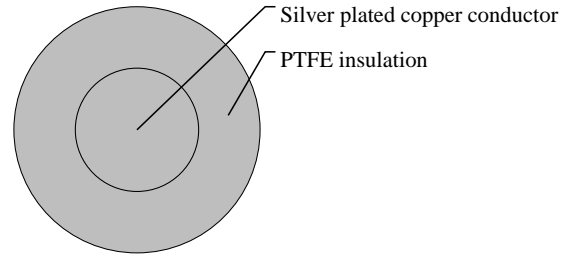
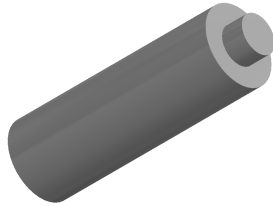
Caledonian

Military Cables

www.caledonian-cables.com

marketing@caledonian-cables.com

MIL-W-16878/4 Type E Wire 1C24AWG



APPLICATIONS

These PTFE insulated single-core MIL-W-16878/4 (Type E) wires are used in military harnessing, power supply lead wire, appliance wiring and medical electronics, The MIL Spec wire has excellent resistance to thermal aging, solder iron damage, flame, and moisture. PTFE also resists solvents, greases, ozone and most other chemicals. The PTFE insulation has a great flex-life and is suitable for a wide frequency range. Compared with other insulations, PTFE saves space and weight and is easy to install.

VOLTAGE RATING

600V

CABLE CONSTRUCTION

Conductor: Solid Silver Plated Copper

Insulation: Extruded PTFE

Insulation Wall Thickness: 0.01"

COLOUR CODE

Color Code: MIL-STD-104 (See page 12)

10 basic colors(BLK,BRN,RED,ORN,YEL,GRN,BLU,VIO,GRY,WHT)

PHYSICAL AND THERMAL PROPERTIES

Temperature Range: -65°C to 200°C

DIMENSION AND PARAMETERS

AWG Size	Conductor Stranding	Conductor Diameter	Conductor Diameter	Approx. Overall Diameter	Approx. Overall Diameter	Approx. Weight
		in	mm	in	mm	LBS/MFT
24	Solid	0.02	0.51	0.04	1	3